

# Touchwood

by Lars Beller Fjetland

Subtle, strong, and elemental, the Touchwood Chair reflects designer Lars Beller Fjetland's belief that interacting with natural materials is of huge importance. Neither unnecessary decorations nor extraneous components should interrupt the simple relationship between material and user. The beechwood is molded into a continuous shape, making it contract grade durable, while preserving its flexibility. All variants of the Touchwood family stack, making them an ideal choice for public spaces or busy homes. If you perceive more than a little influence from classic minimalistic Scandinavian design at play in this hardworking, functional chair, you'd be right! An armchair, counter stool, bar stool and bar chair in a variety of wooden and metal bases, heights and finishes complete the Touchwood Family



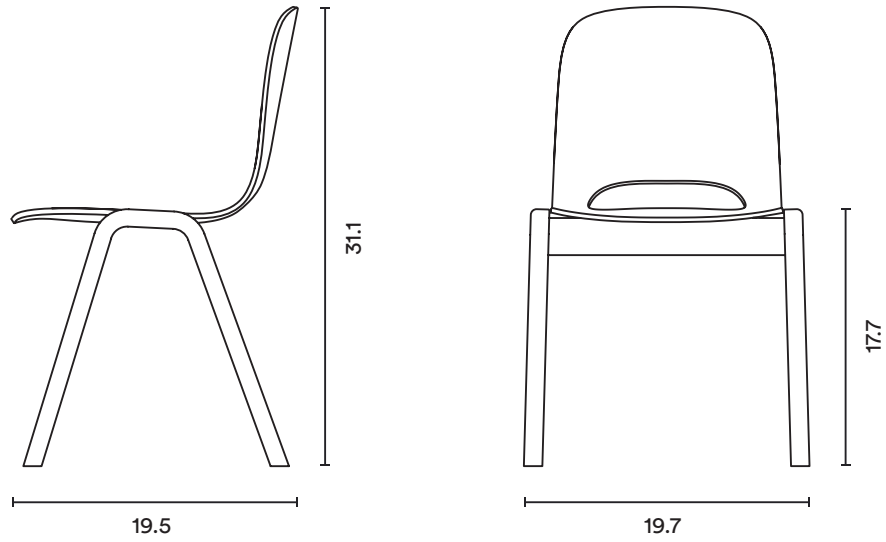
hem

## Technical Specifications

### Touchwood Chair

L: 19.5 x W: 19.7 x H: 31.1 in; Seat height: 17.7 in

Seat width: 15.7 in; Seat depth: 15.6 in



## Materials and Colors

Material: Beech

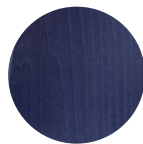


Lacquered Light Beech

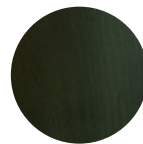
Material: Stained Beech



Black



Blue



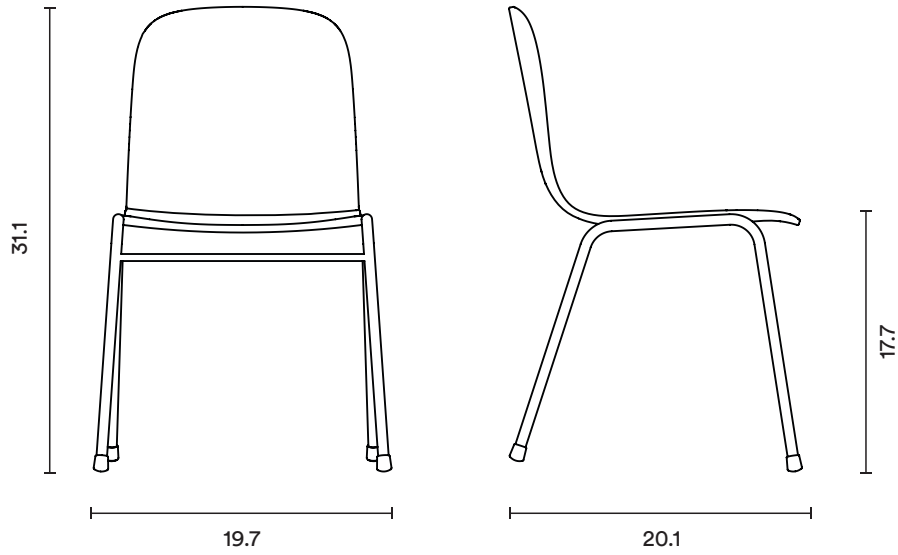
Green

## Technical Specifications

### Touchwood Chair

L: 19.7 x W: 20.1 x H: 31.1 in; Seat height: 17.7 in

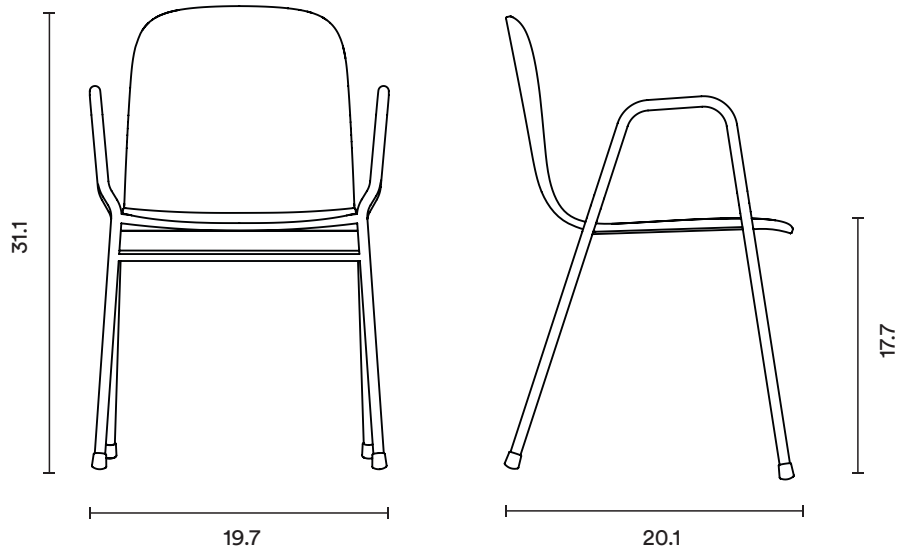
Seat width: 15.7 in; Seat depth: 15.7 in



### Touchwood Armchair

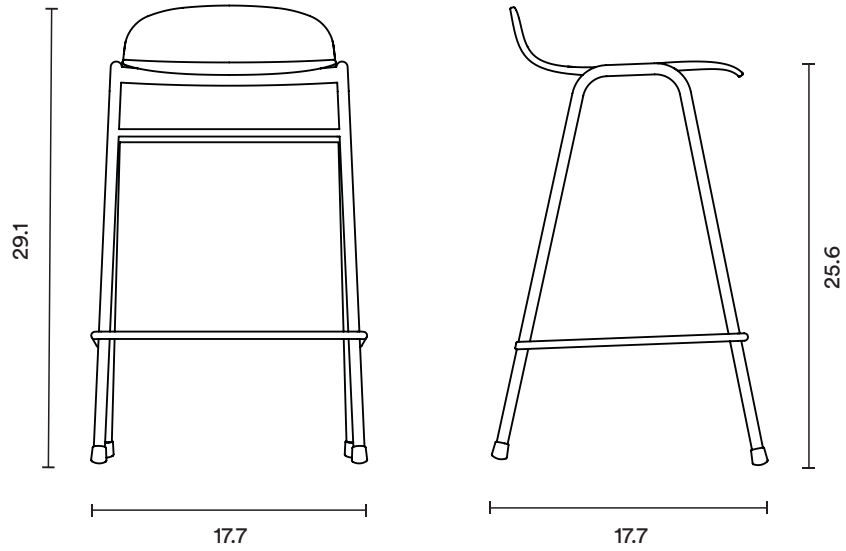
L: 19.7 x W: 20.1 x H: 31.1 in; Seat height: 17.7 in

Seat width: 15.7 in; Seat depth: 15.7 in; Armrest height: 26 in



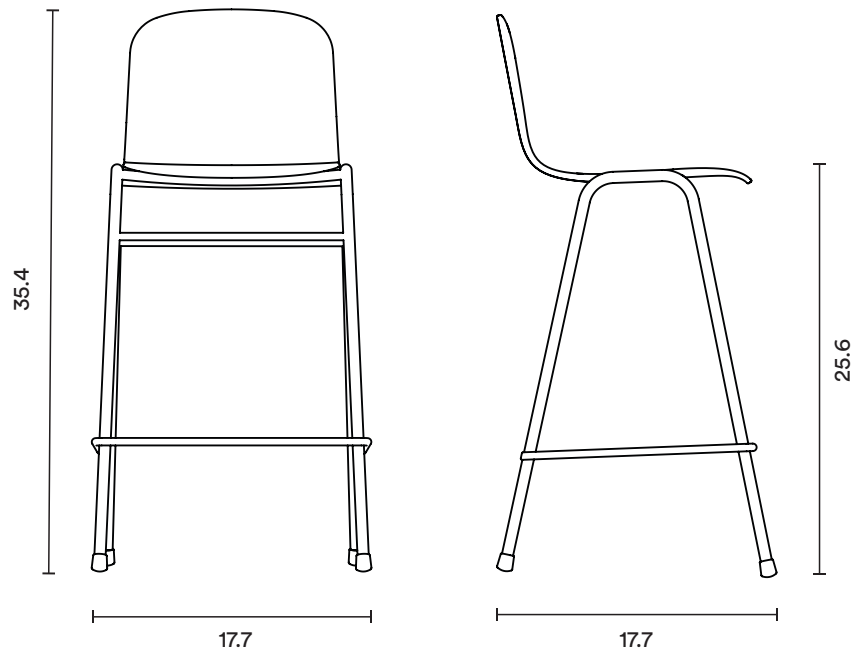
## Counter Stool

L: 17.7 x W: 17.7 x H: 29.1 in; Seat height: 25.6 in  
Seat width: 13.4 in; Seat depth: 12.6 in



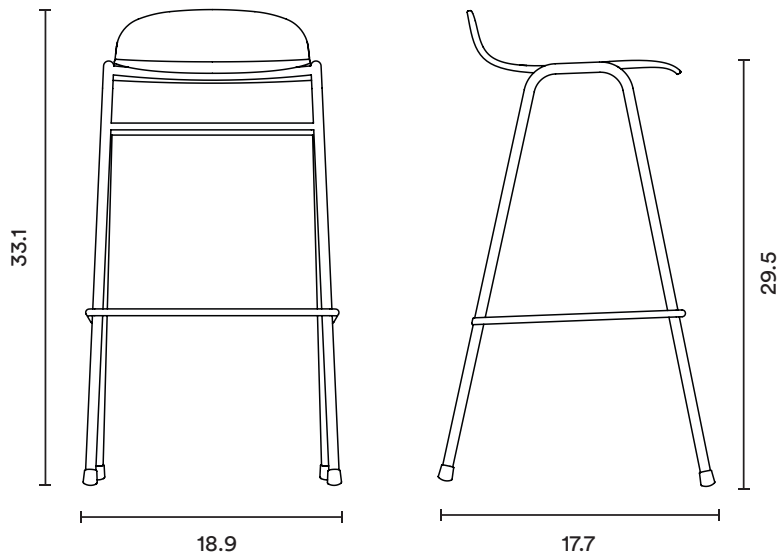
## Counter Chair

L: 17.7 x W: 17.7 x H: 35.4 in; Seat height: 25.6 in  
Seat width: 13.4 in; Seat depth: 12.6 in



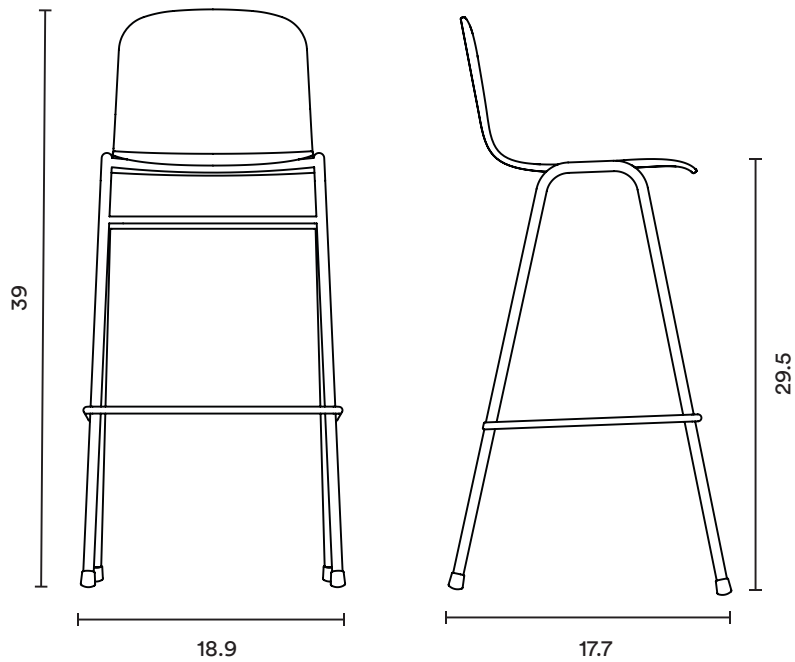
## Bar Stool

L: 18.9 x W: 17.7 x H: 33.1 in; Seat height: 29.5 in  
Seat width: 13.4 in; Seat depth: 12.6 in



## Bar Chair

L: 18.9 x W: 17.7 x H: 39 in; Seat height: 29.5 in  
Seat width: 13.4 in; Seat depth: 12.6 in

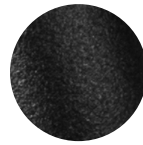


## Materials and Colors

Legs:



Chrome Plated Steel

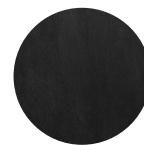


Black Powder Coated Metal

Seat Finish: Natural PUR Lacquered Beech

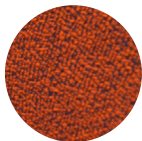


Natural



Black

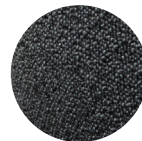
Upholstery: 94% Virgin Wool, 6% Polyamide



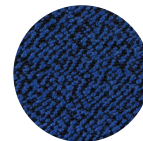
Canyon



Calla



Graphite



Cobalt

## Recommended Stacking:

Touchwood Chair, Touchwood Armchair: 2 – 15

Touchwood Counter Stool, Touchwood Counter Chair: 2 – 7

Touchwood Bar Stool, Touchwood Bar Chair: 2 – 7